

TASKalfa 308ci/358ci/408ci

Color/Monochrome Multifunction Product
for A4 Format



Simplify Office Routine Unprecedented Reliability Reduce Running Costs



www.kyoceradocumentsolutions.com.hk

Born to be Extraordinary


KYOCERA Document Solutions is Extraordinary for

- Broad Range of Multifunction Devices and Printers
- Optimized Total Cost of Ownership (TCO)
- Reliable with Long Life Drum and Parts
- New and Advanced Technology

KYOCERA Document Solutions strives to be a company that contributes to the society and demonstrates a "Customer First" principle by providing customers with maximum value to increase their satisfaction. By adhering to the mission of producing document management devices that take balance between "Economy" and "Ecology", KYOCERA Document Solutions succeeds to develop document management devices with advanced technologies which help customers to optimize office productivity and efficiency at a low total cost of ownership and, at the same time, improving environmental performance.



Options



DP-5130
Document Processor (DSDP)

DP-5120
Document Processor (DSDP)

DP-5100
Document Processor (RADF)



DF-5100
300 Sheet Internal Finisher



DT-5100
Document Tray



NK-7100(B)
Numeric Keypad



MT-5100¹
5 Bin Mailbox



JS-5100
Job Separator



AK-5100
Attachment Kit



RFID IC
Card Reader Holder



DF-5110¹
1,000 Sheet Finisher




DF-5120¹
3,000 Sheet Finisher

Stapler Option
SH-10 for DF-5100 / DF-5110 / DF-5120

Hole Punch Option
PH-5110 for DF-5110



PF-5140²
2,000 Sheet Tray

PF-5130²
2 X 500 Sheet Tray

PF-5120
500 Sheet Tray

TASKalfa 358ci / 408ci only

Available for all models

¹ Requires AK-5100

² Requires PF-5120

Exceptional Product Functionality in COPY/PRINT/SCAN/FAX

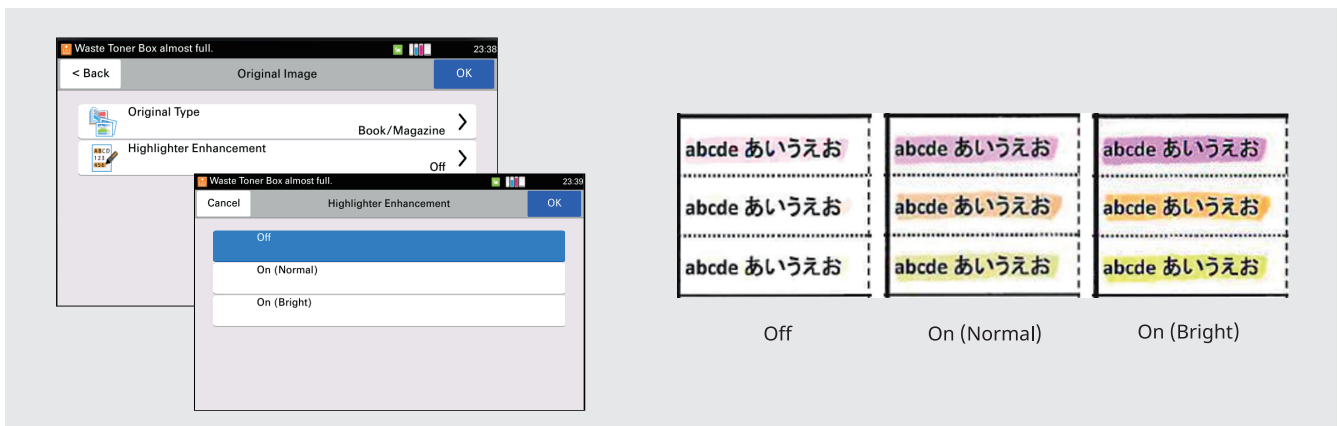


Skip Blank Page:

Blank page is skipped during making copies at Document Processor to save unnecessary cost. You can now detect blank pages with bleed-through originals and notes with ruled lines as blank pages.

Dedicated Preset Copy/Send Mode for Special Original Media:

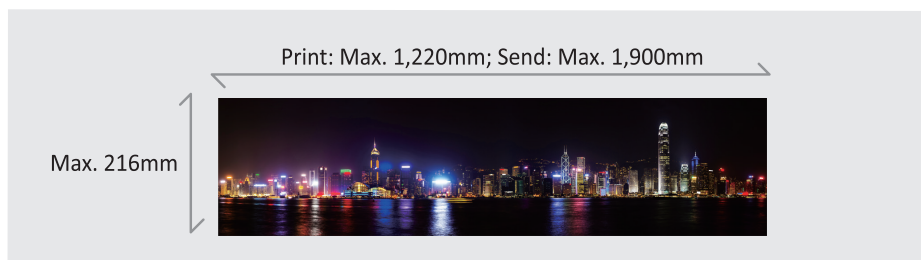
Newspaper, Technical Drawing, ID copy and send (reproduce fluorescent colors clearly) able to select "2 levels" for highlighter.*



Prevent Bleed-thru: Remove unwanted background when copying or scanning printed double-sized thin paper (e.g. newspaper, NCR paper, and magazine).

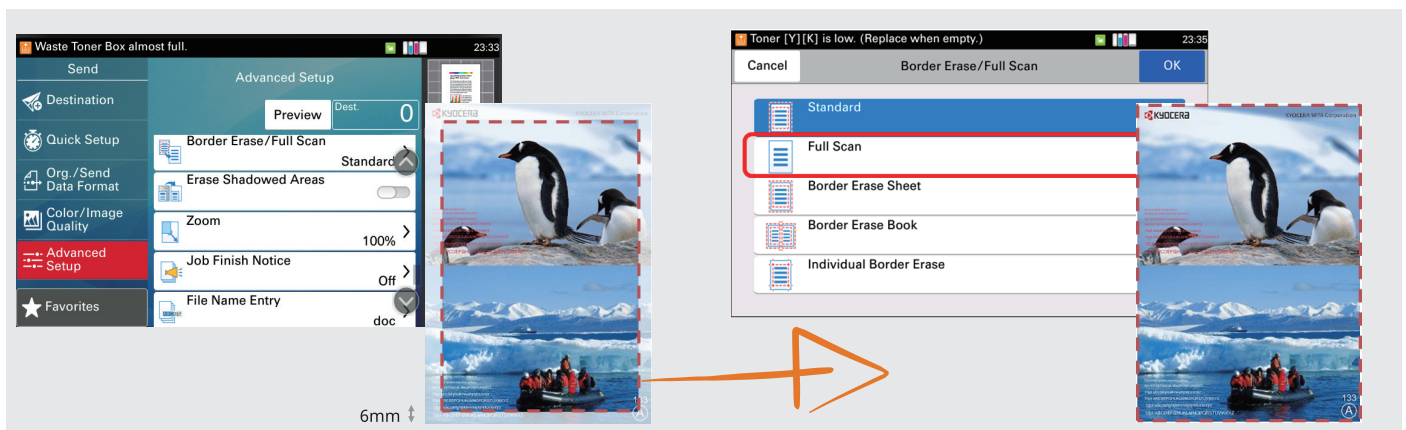
Banner Send & Print:

Scan and produce banner with various paper weight in-house anytime in need (One-sided only; Send Size max:1,900mm; Print Size max: 1,220mm**).



Full scan:

It has become possible to easily carry out the setting of the original scan of the original. The frame of 6mm is set by default, and the edge of the scanned image is cut, but it can be set to full scan with one touch.*

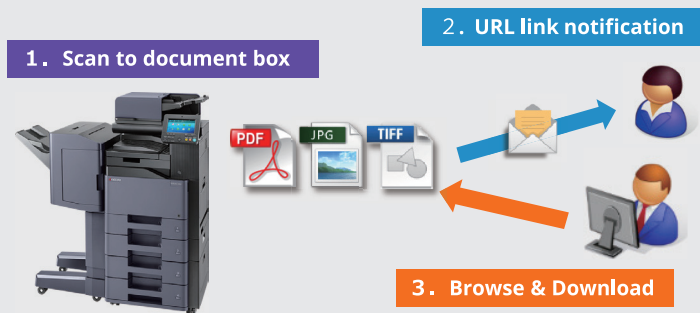


Scan file acquisition without a server:

Can retrieve large scan files without using complicated SMB send. The Scan to URL function enables you to save scanned images in a document box, retrieve URL links via email, and easily download them. This makes it possible to easily retrieve large volumes of scan data without limiting email send size.*

*TASKalfa 358ci/408ci only

**TASKalfa 308ci only support banner send-915mm



Searchable PDF function (Optional):

Scan original paper document, separates texts and images via OCR function to convert texts into text data and composes PDF by combining the images and the text data. This facilitates reuse of PDF file and easily accessible using the search function in PDF file format.

High Compressed PDF Size:

Adopt new image analysis technology to achieve high compressed PDF to smaller file size.

Scanned Image File Size Check:

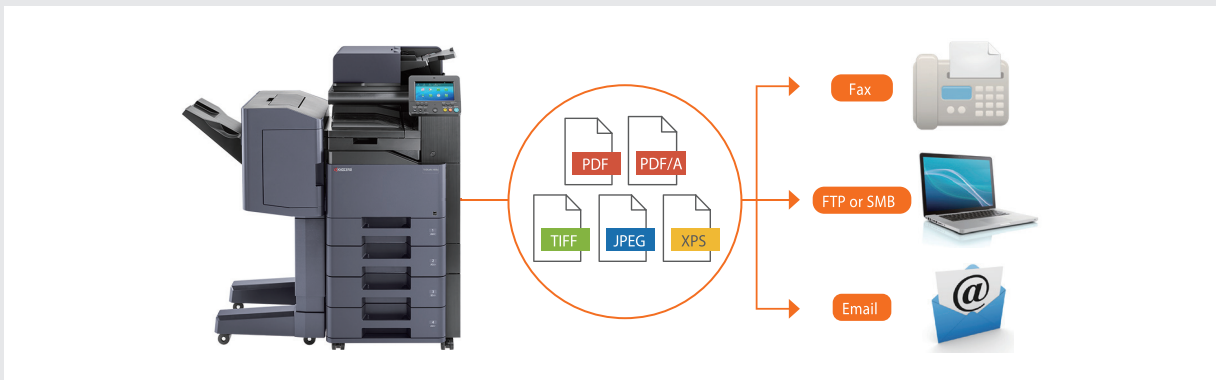
Check the actual scanned document size does not exceed limit before actual sending to email.

FTP/SMB/Email/Fax Multi-Sending:

Send document to different destinations (email addresses, folders, etc.) in a single scan operation.

Fax dedicated paper feed tray:

You set a dedicated paper tray used only for fax-related printing.*



Fax memory reception box:

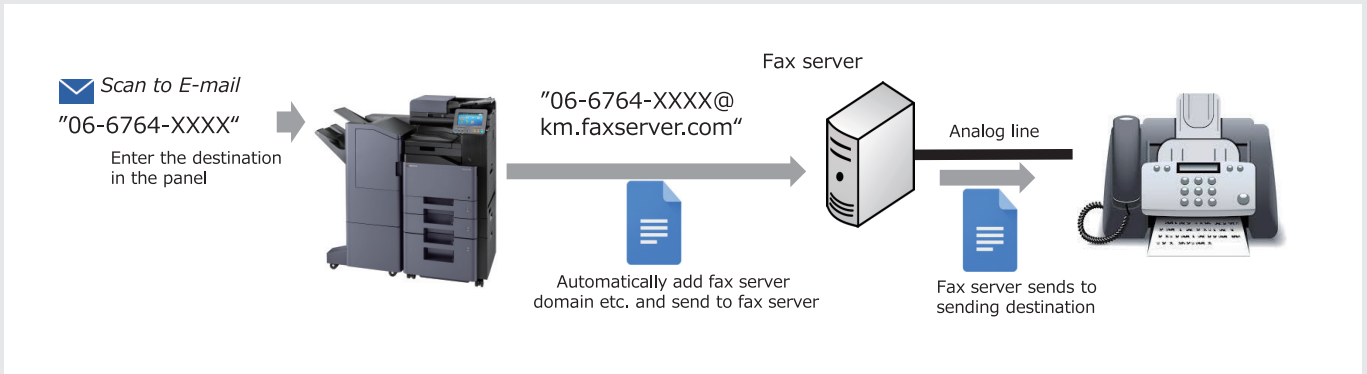
Once all received faxes are received in memory, you can check the contents on the control panel preview before printing.

1 Zoom out.
2 Zoom in.
3 Cancel the job.
4 Displays the data information.
5 Displays the current number of pages and overall number of pages.
6 You can change the job settings.
7 Start the copying.

Using the Preview screen

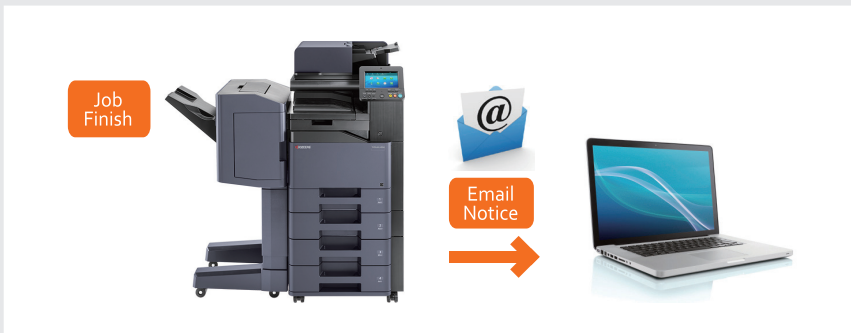
Fax server linkage function:

By linking with fax server software, you can send faxes from devices without fax board. Simply select the Fax Server function from the operation unit, and enter the fax numbers in the transmission destination, and the machine side will automatically assign a domain name etc. and send a mail to the fax server.



Job Finish Notice:

Send email notification to specified user when a copy/scan job is completed.

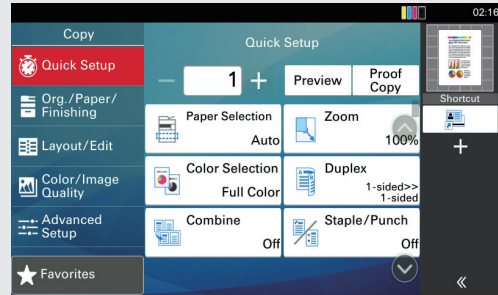


Fast and Simple Operation

Intelligent Control Panel: TASKalfa 358ci/408ci use a new concept user interface. It is changed to the operability with the icon and the intuitive operation such as scroll and slide, pinch in / pinch out like the smartphones and tablets. We have renewed the operation screen so that even customers who operate for the first time will not be confused.



New operation unit (home screen)

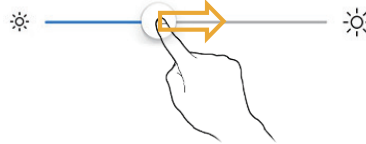


Copy operation (screen)

Page Scroll (momentum scrolling)



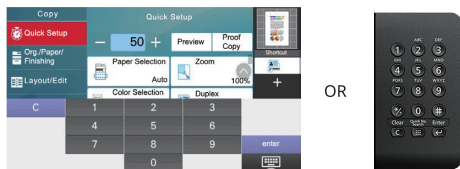
Slider



Pinch In / Out



The numeric key operation changes from hardware numeric key to software numeric key, and the operation part design is streamlined.



Free stop tilt mechanism (movable angle: 90 degrees)
The design is convenient when using a desktop or used by a person in a wheelchair.



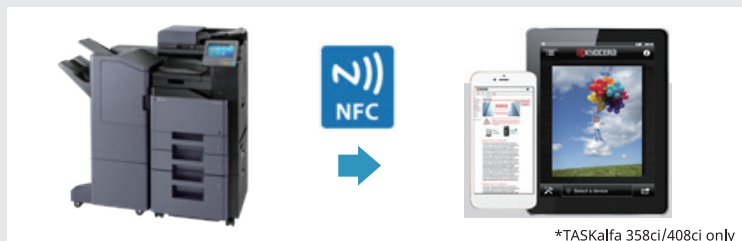
New User Interface:

With the New User Interface, there would be no need for explanations or training, and you can use icons effectively and intuitively operate without hesitation. This is not only about the control panel of the machine, but also the Web screen and printer driver used on PC. The application of Android and iOS are created with the same concept.



NFC Support:

By simply holding an NFC-enabled smart device over NFC, you can easily work with the MFP.



*TASKalfa 358ci/408ci only

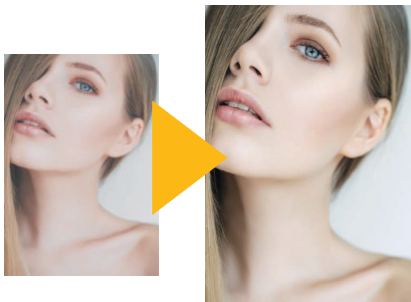


Superior Image Quality

Powerful color performance

- o 1,200 x 1,200 dpi print resolution
- o Remove dullness turbidity to improve the skin color reproduction*
- o Correct color matching algorithm to make the closer colors to the originals*

*TASKalfa 408ci only



Improve skin color reproductivity



Improve gradation / color reproduction
(closer to colors on originals)

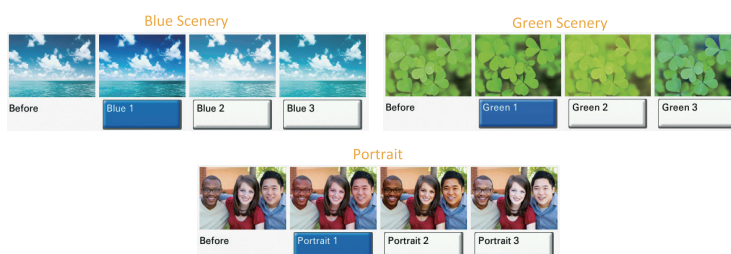
Multiple Image Adjustment Tools for optimal output

Color Optimizer at KYOCERA KX Driver

Allow users to adjust the pixels near the color value or color space of defined areas instead of the entire image by selecting 2 from 3 parameters (Hue, Light, Saturation) and add up to 10 colors in each adjustment settings.

One-Touch Color Image Adjustment

Total 9 photo adjustment modes to select optimal settings for photo image (Portrait; Blue Scenery; Green Scenery; Vivid; Soft; Sharp; Smooth; Light; Heavy).



Innovative KYOCERA Mobile & Cloud Solutions

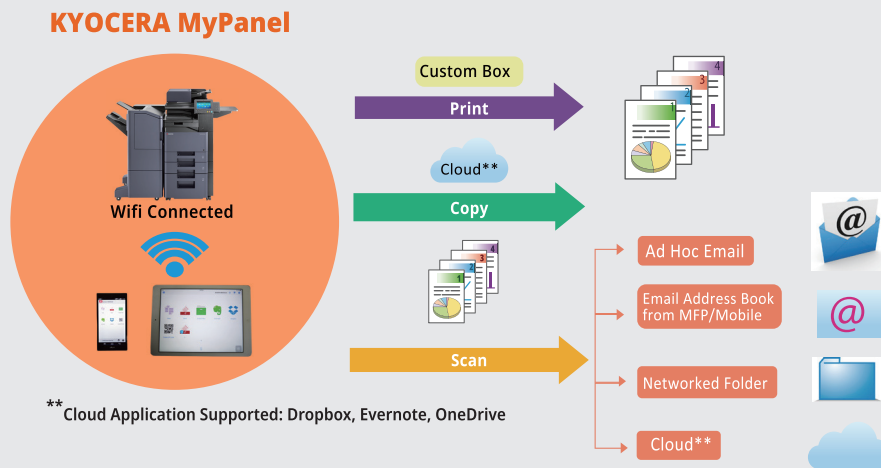
KYOCERA Mobile Print

An app-based solution that enables users to simply and conveniently print documents, web pages, and images on demand from virtually anywhere, on their Apple and Android smartphone and tablet devices to select KYOCERA MFPs and printers. Users can also scan files and images from same MFPs to their mobile devices. Our devices also support AirPrint for iPhone and iPad.



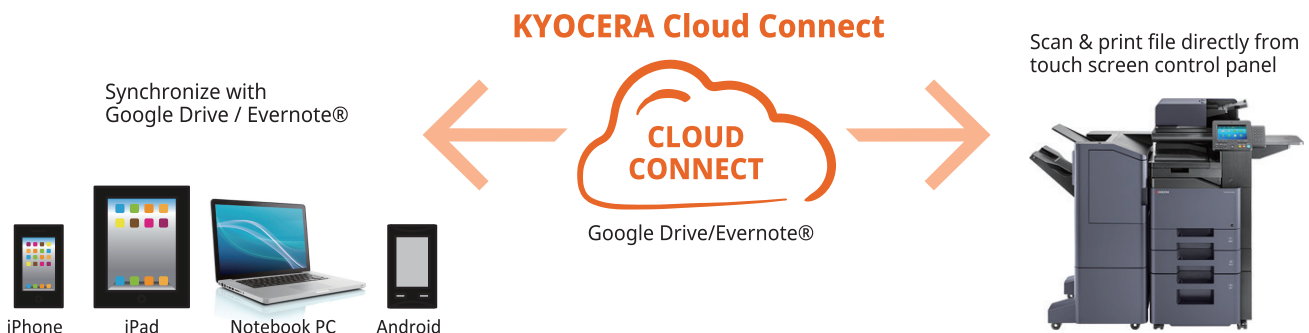
KYOCERA MyPanel

Use smartphone or tablet to connect a compatible networked KYOCERA printing device on your local Wi-Fi network wirelessly. Users can perform COPY/PRINT/SCAN from Custom Box or Cloud** by mobile devices with personalized settings.



KYOCERA Cloud Connect (Optional)

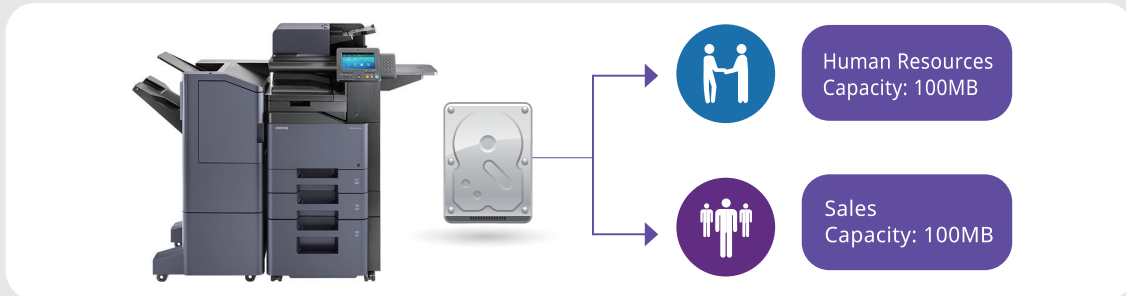
Retrieve and print files in Google Drive and Evernote®, a cloud service provider, directly from any KYOCERA HyPAS-enabled MFPs. Users can even upload scanned files directly to Google Drive and Evernote® – directly from the MFP, without going through a computer.



Stay Safe and Secure

Password Protection Setting:

Allow administrator to set Password Policy to limit user access to designated capacity.



Private Print:

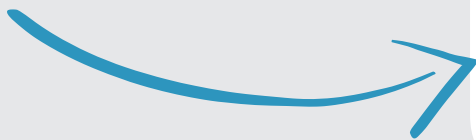
Release print job at the device by entering a preset four-digit access code when making a print at KYOCERA KX Driver.

Security Watermark:

Distinguish original from copies and provides protection for sensitive document against duplication.

KYOCERA Data Security Kit:

Encrypt data before storing in the hard drive and automatically overwrite all data stored in the hard drive when the data becomes unnecessary. You can activate without issuing or entering a license key. (TASKalfa 308ci can be activated when HD-6 and HD-7 are installed.)



TPM (Trusted Platform Module) installed:

TPM is a hardware chip that encrypts and decrypts data. Data stored in a dedicated storage are mounted on the TPM chip can never be accessed from an external device, so confidential information can be safely stored.*

Secure Boot:

While the power is off, there is a possibility that the firmware stored in the storage can be rewritten due to unauthorized access. At startup, perform tampering checks on the firmware to check if unauthorized rewriting has been performed. If an error is detected, the startup is stopped and an error is displayed.*

Run-time Integrity Check:

While the device is in operation, unauthorized access may allow rewriting of the FW deployed in memory. During operation, the firmware is periodically checked if the tampering occurs to make sure that unauthorized rewriting has not been performed. If an error is detected, the use of the device is stopped and an error is displayed.*

*TASKalfa 358ci/408ci only



Eco-Friendly

Design for energy savings

Weekly Timer: Allow administrator to preset the machine on and off time to maximize power savings. You can set the translation to the sleep state/return automatically at the specified time the day of the week.

EcoPrint: Flexible EcoPrint setting to consume less energy and toner.

Energy Saver: 0.5~0.7W or less power consumption at Energy Saver Mode.

Protect the environment

- Leading Long-life KYOCERA proprietary Amorphous Silicon (A-Si) Drum (TASKalfa 408ci), developer and replacement parts.
- Parts for Recycling.
- Non-toxic Materials.
- Quiet operation design for a comfortable Working Environment.

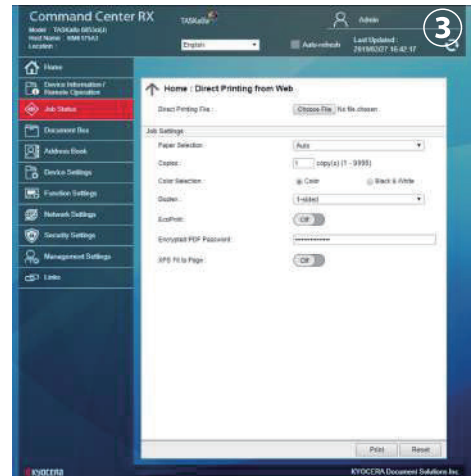
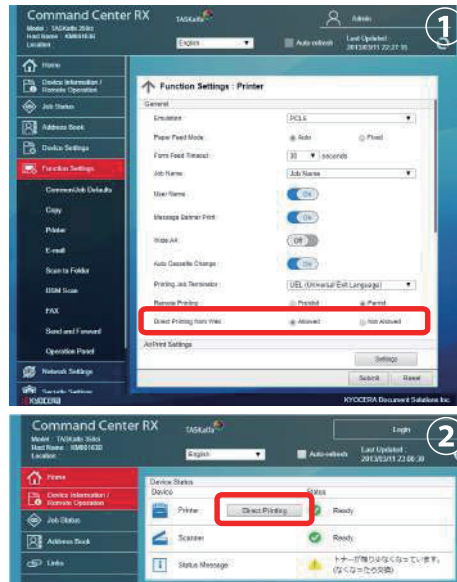
Minimize Management Costs

Smart utilities for managed print and minimize related device management costs.

KYOCERA Command Center RX:

By using a web browser, the authorized administrator can access the built-in KYOCERA Command Center RX and check the operation status of the device, toner level, paper availability, as well as change settings related to security, network printing and advanced network setting etc.

And supported the direct printing function. You can print from the MFP by specifying a PDF file such as on a PC on CCRX. This allows you to print documents without installing the Printer Driver.*



KYOCERA Net Viewer:

A comprehensive network management tool used to monitor, maintain, and update up to 100 network printing devices locally and remotely. Through KYOCERA Net Viewer, administrators can simply install and update firmware on all KYOCERA connected devices while easily monitoring printed black/color pages, device configuration, accounting, toner usage, and alerts. By implementing KYOCERA Net Viewer, the manpower required to monitor connected devices is greatly reduced.

KYOCERA Net Manager (Optional):

Protect confidential data, manage & control the overall output (copy/print/scan) and get detailed reports. Users can keep an overview of personal printing jobs with web browser. It greatly simplifies scanning processes as it automatically displays a set of personalized options.

By adding the Card Authentication Kit (Optional) for KYOCERA Net Manager, you are able to swipe ID Card to get print document directly. User administrator can also set the IC Cards to allow quick and secure access with pre-defined user restrictions such as color output restrictions and output quota.



Main Specifications

Model	TASKalfa 308ci	TASKalfa 358ci	TASKalfa 408ci
Main Function	Copy, Print, Scan, Fax (Optional)		
Writing Method	Semiconductor Laser		
CPU	Monaco (ARM Cortex-A9 Dual core 1.2GHz+ ARM Cortex-M3 100MHz)	Freescale QorIQ T1024 (Dual Core) 1.0GHz	
Print Speed (A4)	Simplex (Mono/Color) 30/30 cpm	35/35 cpm	40/40 cpm
Scanning Speed (A4) 300dpi	Simplex 40/30 ipm	60/60 ipm	
	Duplex 17/13 ipm	26/26 ipm	
Scanning Speed (A4) 300dpi Dual Scan	Simplex -	60/60 ipm	
	Duplex -	120/120 ipm	
Scanning Speed (A4) 300dpi Dual Scan	Simplex -	85/65 ipm	
	Duplex -	170/130 ipm	
Memory	Standard 1,536MB (Max. 3,072MB)	Standard 4GB (Max. 4GB)	
SSD/HDD Capacity	SSD 32GB (Opt)/HDD 128GB (Opt)	SSD 16GB (Std) / HDD 320GB (Opt)	SSD 8GB (Std)/HDD 320GB (Std)
Warm Up Time	20 seconds		24 seconds
Paper Capacity	500 sheets (Cassette) + 100 sheets (MPT) / 3,100 sheets (Main Unit + PF-5120 + PF-5140 + MPT)		
Paper Size	Cassette/Option	Max. A4 (Legal) - Min. A6R	
	MPT	Max. A4 (Legal) - Min. A6R & Banner Print of 1,220mm x 216mm	
Paper Weight	Cassette/Option/MPT	60 – 220 g/m ²	
Duplex Printing	Paper size:A4 (Legal) – A5R; Paper weight: 60 - 220 g/m ²		
Output Capacity	Max. 500 sheets face-down		
Control Panel	7 inch Color Touch LCD Panel		
Document Processor	Standard (Max. 75 sheets RADF Type)	Optional (RADF Type/ Dual: built-in CIS type)	
Dimension (W x D x H) (Main Unit)	550mm x 507.5mm x 736.6mm	550mm x 508mm x 612.8mm (without DP)	550mm x 550mm x 612.8mm (without DP)
Weight (Main Unit)	Approx. 49.6 kg	Approx. 47.4 kg (without DP)	Approx. 49.3 kg (without DP)
Power Consumption (Standard configuration)	Copy/Print Mode	497W	563W or less
	Stand-by Mode	69W	81W or less
	Energy Saver	0.5W	0.7W or less
Noise (ISO7779/ ISO9296)	Copy/Print Mode	65.4dB(A)	67dB(A)
	Stand-by Mode		45dB(A)
Copy Functions (Standard)			
Copy Size	Max. A4 (Legal) – Min. A6R		
Resolution	600 x 600 dpi		
First Copy Time (Mono/Color)	6.4 sec/7.8 sec	5.9 sec/7.3 sec	5.8 sec/6.9 sec
Zoom Ratio	Manual	25% – 400% (1% per Step)	
	Pre-defined	7R5E	
Multiple Copy	1 – 999	1 – 9,999	
Print Functions (Standard)			
Resolution	1200 x 1200 dpi; 600 x 600 dpi level		
PDL	PRESCRIBE, PCL6 (PCL-5c, PCL-XL), KPD3 (PostScript 3 compatible), PDF, XPS, OpenXPS		
First Print Out Time (Mono/Color)	7.0 sec/8.0 sec	5.5 sec/6.5 sec	5.4 sec/6.4 sec
Supported Protocol	TCP/IP, IPv4, IPv6; HTTP, LPD, FTP, IPP, RawPort, LLTD, SNTP, DHCP, SMTP, POP3, DNS, SNMPv1/v2, WSD Scan/Print, Apple Bonjour		
Operating System Supported	Windows Server 2008/2008 R2/2012/2012 R2, Windows Vista/7/8/8.1/10, Apple Macintosh OS X 10.9 or later, Linux		
Interface	USB2.0 High Speedx1; 1000BASE-T/100BASE-TX/10BASE-T; USB Host interface (USB Host) x 2	USB2.0 High Speedx1; 1000BASE-T/100BASE-TX/10BASE-T; USB Host interface (USB Host) x 3	
USB Memory Printing	Standard		
USB Memory Printing Format	TIFF, JPEG, PDF, XPS		
Mobile Printing	AirPrint, Mopria, KYOCERA Mobile Print		
Scan Functions (Standard)			
Color Selection	Auto Color (Color/Gray); Auto Color (Color/B&W); Full Color; Grayscale; Black & White		
Resolution	600dpi, 400dpi, 300dpi, 200dpi, 200x100dpi, 200x400dpi		
File Format	TIFF, JPEG, XPS, PDF (MMR/ JPG/ /High-compression PDF), PDF/A, Encrypted PDF, Searchable PDF (Optional), MS Office file (Optional)		
Image Type Mode	Text, Photo, Text + Photo, OCR		
Transmission Type	Scan to SMB; Scan to E-mail; Scan to FTP or FTP over SSL; Scan to USB; TWAIN Scan; WSD Scan; WIA		
Address Storage	200 addresses (Common address list), 50 groups (Group address list)	2,000 addresses (Common address list), 500 groups (Group address list)	
Fax Functions (Optional)			
Original Size	Max. A4 (Legal) - Min. A6 (Statement)		
Coding Method	MMR, MR, MH, JBIG		
Transmission Speed	33.6 kbps / Less than 3 sec.		
Image Memory Capacity	3.5MB	170MB	
Dual Fax	-	Yes (Fax System 10(X) x 2 units required)	
Optional Items			
Document Processor	-	DP-5100: 75 sheet RADF Type; DP-5120: 100 sheet (Dual: built-in CIS type); DP-5130: 270 sheet (Dual: built-in CIS type)	
Paper Feeder	PF-5120: 500 sheet x 1 Paper Feeder; PF-5130: 500 sheets x 2 Paper Feeder; PF-5140: 2,000 sheets x 1 Paper Feeder (A4/Letter)		
Card Authentication	Card Authentication Kit(B)/ Card Reader Holder 11		
Gigabit Ethernet Board	IB-50: For Additional Work		
Wireless LAN Interface	IB-35 (802.11 b/g/n/Wireless LAN/WiFi Direct)		
Storage Device	HD-6: SSD 32GB; HD-7: SSD 128GB	HD-11(B): 320GB (TASKalfa 358ci only)	
Finisher	JS-5100: Inner Job Separator; DF-5100: 300 sheet Inner Finisher; AK-5100: Attachment Kit; MT-5100: 5 bins Mailbox Sorter; Staple: SH-10	JS-5100: Inner Job Separator; DF-5100: 300 sheet Inner Finisher; DF-5110: 1000 sheet Finisher; DF-5120: 3,000 sheet Finisher; AK-5100: Attachment Kit; PH-5110: Punch Unit; MT-5100: 5 bins Mailbox Sorter; Staple: SH-10	
Fax System	Fax System 11	Fax System 10(X)	
Internet FAX	-	Internet FAX Kit(A)	
Embedded OCR	-	Scan Extension Kit(A)	
Numeric Key Pad	-	NK-7100(B)	
Original Hard Copy Holder	DT-5100		

KYOCERA Document Solutions Hong Kong Limited

16/F, Mita Centre, 552-566 Castle Peak Road,
Tsuen Wan, N.T., Hong Kong
Tel: +852-3582-4000 Fax: +852-3185-1399



Kyocera Document Solutions does not warrant that any specifications mentioned will be error-free. Specifications are subject to change without notice. Information is correct at time of going to press. All other brand and product names may be registered trademarks or trademarks of their respective holders and are hereby acknowledged.